



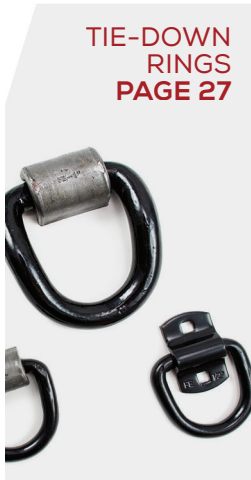
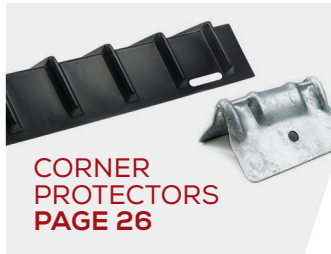
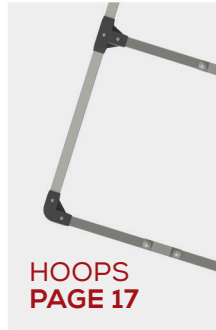
TRAMEC SLOAN
FLEET ENGINEERS DIVISION

CARGO CONTROL

- // HYDRAULIC SAVE-A-LOAD® CARGO BARS
- // SAVE-A-LOAD® HOOPS & ACCESSORIES
- // SAVE-A-LOAD® REPLACEMENT PARTS
- // CORNER PROTECTORS
- // TIE-DOWN RINGS
- // LASHING RINGS
- // DECKING BEAM

FLEETENGINEERS.COM





INTRODUCTION

About Tramec Sloan..... 2
Product Lines 4

SAVE-A-LOAD BARS 10

SL-30 Series 12
SL-20 Series 15
SL-10 Series 16

SAVE-A-LOAD ACCESSORIES

Aluminum Hoops 17
Bicycle Racks 18
Locking Sleeves 18
XL Extension Tube 18
Anti-Theft Racks 19

SAVE-A-LOAD REPLACEMENT PARTS

Replacement Parts..... 20
SL-30/SL-20 Exploded View 24
SL-10 Exploded View 25

OTHER CARGO CONTROL

Corner Protectors..... 26
Tie Down Rings 27
Lashing Rings..... 28
Decking Beam 29

INDEX 30

TESTIMONIALS 32



BUY PINK FOR A GOOD CAUSE!

For each purchase of a pink Save-A-Load bar, we make a donation to Breastcancer.org, a nonprofit supporting those with breast cancer.

GROWING OUR HISTORY

Tramec Sloan's history is rooted in the entrepreneurial spirit of Americans who believed that manufacturing quality products with great service provides an exceptional value to the industry.

The story began in 1981 with Sergio Campanini founding Tramec Corp in Iola, Kansas. Sergio created the famous 31402 hose end repair kit which was further developed into a full line of hose assemblies. Over the years, Tramec grew through product innovation and a series of acquisitions that have merged rich company histories.

Today, **Tramec Sloan** is an operating unit of Tramec Holdings, focusing on the Heavy Duty Commercial Vehicle Industry as a leading manufacturer and supplier of a diverse range of highly engineered truck and trailer components.

OUR GROWTH through acquisition over the years expands our product portfolio & capabilities

May 2013

Tramec, LLC acquired **Sloan Transportation Products** in Holland, MI to form Tramec Sloan

November 2013

Tramec Sloan acquired **Crawford Machine Inc** (CMI) in Galion, OH

November 2017

Tramec Sloan acquired **Esdan Plastics Pty** in Melbourne, Australia

June 2018

Tramec Sloan acquired **Fleet Engineers** in Muskegon, MI

SLOAN TRANSPORTATION PRODUCTS

In 1977 Sloan Transportation Products was formed as a division of the Sloan Valve Company. Sloan Transportation became known as a strong aftermarket provider of OE quality air brake and electrical components for the heavy-duty tractor and trailer markets.

Looking to expand product lines, leadership and facilities, Tramec, LLC acquired Sloan Transportation Products in May 2013 to form **Tramec Sloan**. This Holland, Michigan location now serves as the company's main office and PDC.

CRAWFORD MACHINE, INC. (CMI)

Founded in 2001 by the Hessey family, CMI got started by producing hose assemblies and bulkhead fittings. They quickly expanded their capabilities and product line, manufacturing over 40 styles of brass fittings.

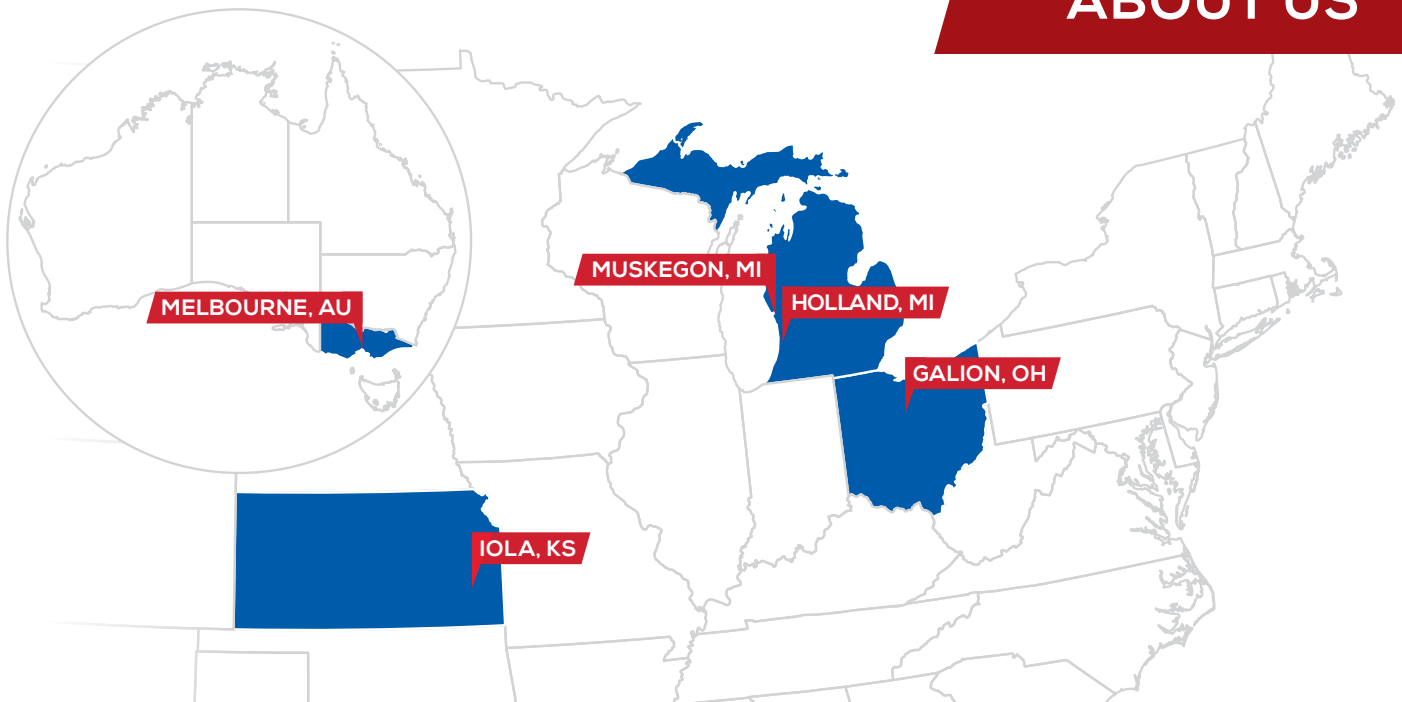
In November 2013, CMI was acquired by **Tramec Sloan** to bring brass manufacturing expertise to our product lineup. Located in Galion, Ohio, this facility processes over 9 million lbs of brass each year and we continue to invest in new technologies.



**TRAMEC
SLOAN**

TRAMEC





ESDAN PLASTICS, PTY

Esdan Plastics was established in 1992 after long-time employee, Bert Ekenaike, purchased Esdan-Flavell Pty Ltd. The company's state-of-the-art manufacturing facility is located in Melbourne, Australia and produces over 30 types of plastic hoses and tubes. Esdan takes pride in serving a global customer base, with products designed for automotive, industrial, mining, agricultural and household applications.

In November of 2017, **Tramec Sloan** acquired Esdan to improve our supply chain and product offering.

FLEET ENGINEERS, INC.

What began in a garage by Louis E. Eklund, Jr. as a start-up in 1963 has grown into a company built on a solid reputation for producing high quality truck & trailer products.

In 2018, Fleet Engineers became a division of **Tramec Sloan** and continues to design and manufacture value-added product solutions for Spray Control, Door Systems, Cargo Control, and more. Located in Muskegon, Michigan, the Fleet Engineers Division is a campus of four buildings with over 177,000 total square footage.

OTHER TRAMEC HOLDINGS COMPANIES:

Tramec Hill Fastener
U.S. made, high quality cold-formed fasteners

Continental-Aero
Stocking one of the largest locknut inventories

Tramec Plastics & Composites
U.S. based precision injection molding solutions

Termico Technologies
Custom PTC Heater solutions designed and made in the USA





AIR BRAKE PRODUCTS

Rubber Air Brake
Hose Assemblies

3-in-1 & 4-in-1 Wraps

Tractor-to-Trailer
Hose Assemblies

Coiled Air Assemblies

Bulk Nylon Air Brake Tubing
& Rubber Hose

Air Compressor
Discharge Hoses

Standard Gladhands

Swing-Away Gladhands

Shutoff Gladhands

38° Gladhands

Rapid-Release

MAXXGrip™ Gladhands

Gladhand Grips

Gladhand Seals

Pogo Sticks

Tracker Bars

Springs & Tender Kits

Hose Clamps & Spacers

Air Tanks

Drain Valves

Dash Control Valves

Air Brake Valves

Air Accessory Valves

Control Boxes

Air Cylinders



For more than 40 years, air brake products have been at Tramec Sloan's core. We manufacture the vast majority of this product line right here in the United States.

Tramec Sloan offers the industry's largest selection of gladhands and utilizes over **30 million feet of rubber hose** each year to produce our air brake hoses. Plus, many of our air products are designed to stand up to corrosion which help keep trucks on the road longer.

As a trusted industry leader, you can find our air products on **nearly every trailer** in the U.S.!



ELECTRICAL PRODUCTS

Sonogrip® ABS & Standard Cables

7-Way ABS Cables

Standard Cables

Single Pole & Dual Pole Cables & Receptacles

Plugs

Smart Box® Receptacles

30-Pin Receptacles

Nylon Receptacles & Adapter Boxes

Zinc Receptacles & Adapter Boxes

Junction Boxes

Bulk Wire & Cable

Electrical Connectors

Heat Shrink Tubing

Battery Terminals

Power Terminals

Power Lugs & Splices

Battery Cables

Circuit Breakers

Fuses

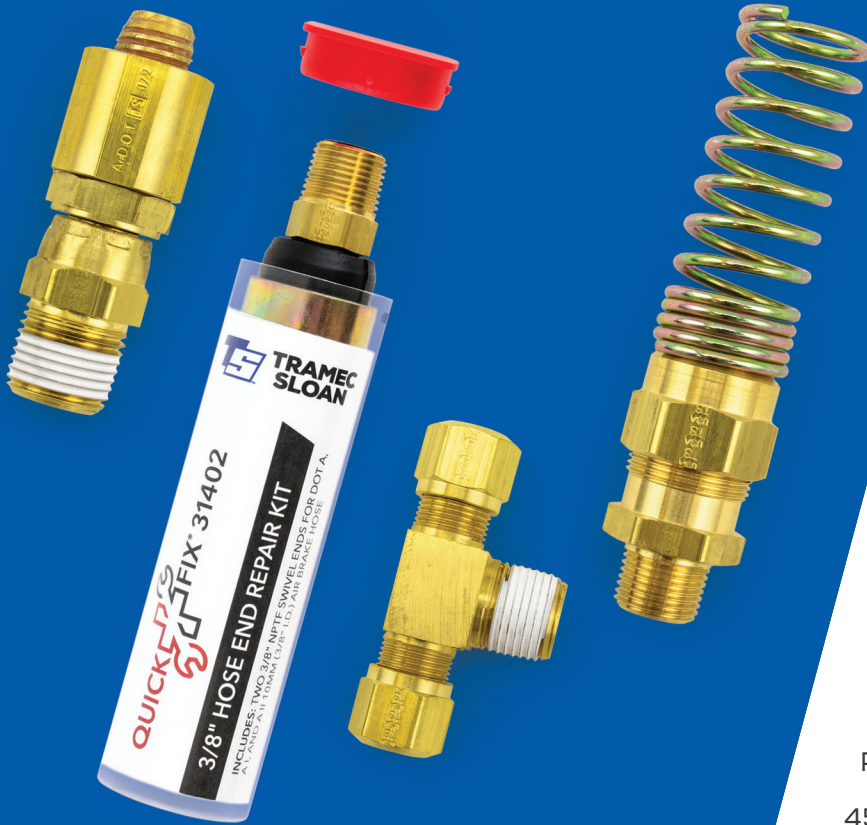
Tools & Kits

Switches & Toggles

Tramec Sloan's tradition of high quality and attention to detail carries through to our electrical products. You'll find the industry's **top OEMs** manufacturing with our receptacles as well as our cables stocked by highly trusted **distributors all across the map.**

We'll also step up to innovate when challenged by our customers to find solutions. That's why products like the Smart Box® Receptacle and the Sonogrip® ABS Cable were developed and became industry standards in the Heavy Duty market.





FITTINGS & FASTENERS

Quick-Fix® Hose End
& Field Repair Kits

Nylon Tube Fittings

Brass D.O.T. Push-In
Air Brake Fittings

Composite D.O.T. Push-In
Air Brake Fittings

Rubber Hose Air Brake Fittings

Copper Tube Air Brake Fittings

Bulkhead Fittings

Transmission Fittings

Pipe Fittings

45° Flare Fittings

Inverted Flare Fittings

Compression Fittings

Captive Sleeve
Compression Fittings

Hose Barbs

Low-Pressure,
Push-On Hose Barbs

Garden Hose Fittings

Grease Fittings

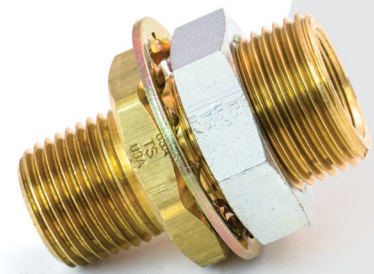
Truck & Ball Valves

Drain Cocks & Shut-Off Valves

Lead Free Fittings

Bin Assortments

Fasteners



Our 144,000 square ft. plant in Galion, Ohio is home to more than 50 machines for forging and machining brass fittings as well as quality control & testing labs.

We're constantly investing in industry leading technology to continuously improve our capabilities and expand product selection.

We convert more than **9 million pounds** of brass each year for our extruded & forged fittings. Manufacturing our own fittings allows us to provide high quality and exceptional fill rates for our customers.



The Fleet Engineers Division of Tramec Sloan excels in all things Spray Control. We do more than keep the water and dirt off your load or truck. From light to heavy-duty applications, the Fleet Engineers Division's Spray Control products are designed to deliver fuel savings and road safety benefits. Our complete line of metal and poly fenders, mounting hardware, mudflaps, and accessories are your single source for spray control solutions.

We design and manufacture the majority of our spray control line in the USA at our Fleet Engineers Division in Michigan, so you can have confidence knowing they're made with quality & durability in mind.

SPRAY CONTROL

The AeroFlap®

Anti-Spray Poly Flaps

Standard Poly Flaps

Top Flaps

Spring Loaded Flap Brackets

Bar Type Flap Brackets

Anti-Sail Brackets

Poly & Classic
Quarter Fenders

Poly & Classic
Full Round Fenders

Poly & Classic
Single-Radius Fenders

Poly & Classic
Double-Radius Fenders

Fender Mounts

Brushes

Conspicuity





DOOR SYSTEMS

ROLL-UP DOORS:

PrecisionTrak Wood Roll-Up Doors

ToughTrak Steel-Clad Roll-Up Doors

Replacement Panels

Hinges, Rollers & Roller Mounts

Locks & Latchplates

Track, Operator & Components

Lift Handles & Pull Straps

Cables & Brackets

Seals & Retainers

Conversion Kits

SWING DOORS:

Swing Door Hinges

Hinge Pins & Butts

Hold-Backs

Handles

Bumpers

Lockrods & Components

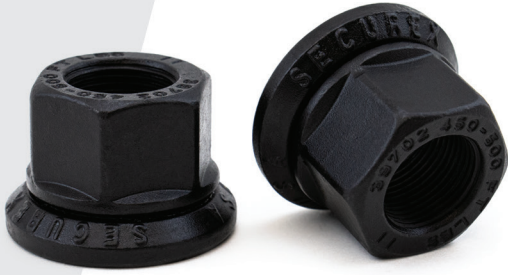
Louvered Vents

Dry Freight Vent Doors

When you choose a Door System from Tramec Sloan's Fleet Engineers division, you can be confident it has been engineered to serve your needs!

From our installation-optimized, OEM-designed systems to the most complete line of aftermarket hardware and replacement parts in the industry, we set the new benchmark for quality and progressive door solutions.





PARTS & ACCESSORIES

ENGINE & TRACTOR:

Water Pumps

Hose Clamps

Fuel Caps

Diesel Anti-Siphon Devices

Oil Caps & Dipsticks

Wiper Blades

LANDING GEAR:

Crank Handles

Sand Shoes

Axles & Housings

Braces

WHEELS:

Tire Carriers

Hub Caps

Wheel Bearings &
Wheel Nuts

Wheel Chocks

OTHER:

Safety Decks &
Folding Steps

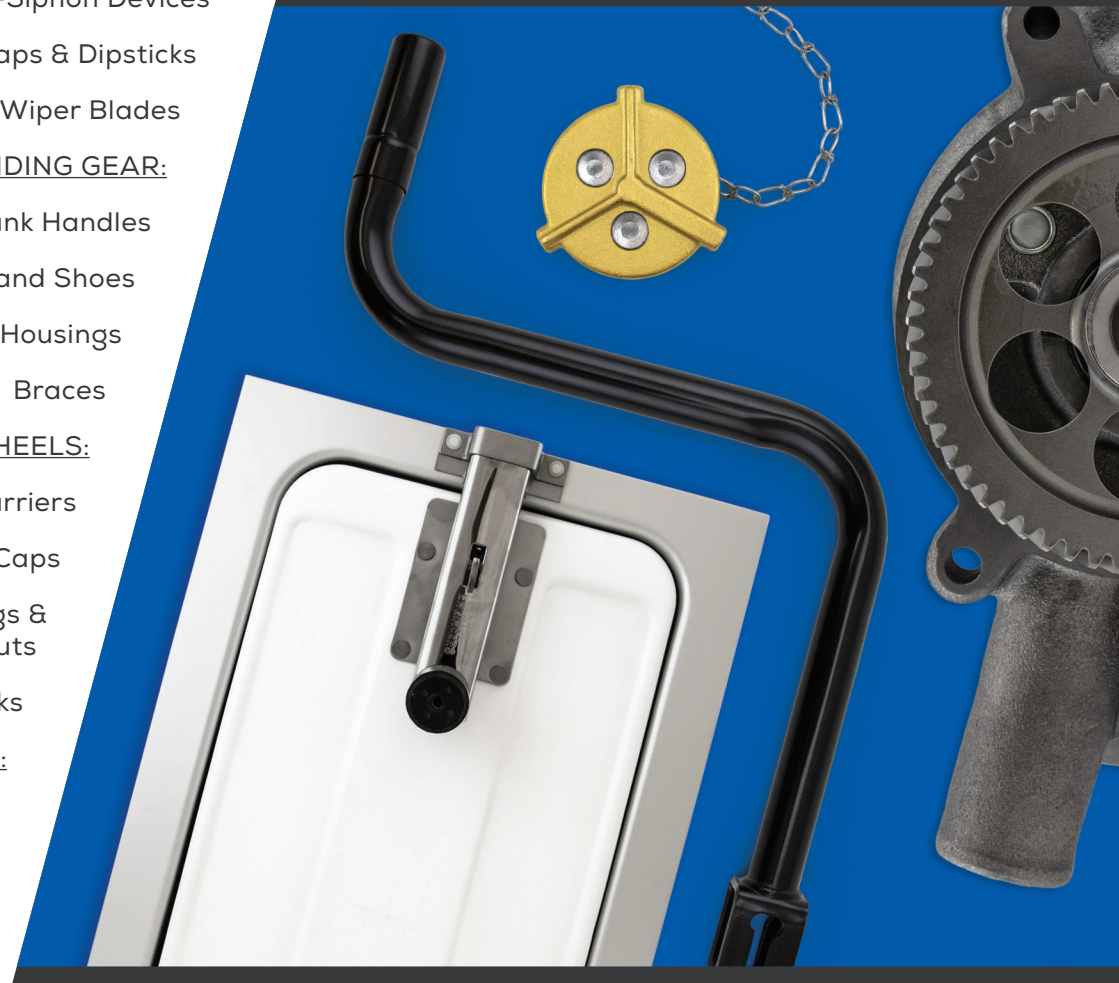
Trailer Vents

Document Holders

From under the hood
to the back of the trailer...
We've got you covered!

Over the years, Tramec Sloan
has expanded our product offering
outside of our core areas as our
customer needs have grown.

Whether an OEM is looking for us to
manufacture a brass fuel cap for their
production or a distributor needs a
made-in-the-USA water pump, we have
you covered. Our commitment to deliver
high quality at a great value is never
compromised, ever.



SAVE-A-LOAD® BARS

ADVANCED CARGO MANAGEMENT SOLUTIONS FOR SECURING LOADS & REDUCING TRANSIT DAMAGE

Engineered for durability and versatility, Save-A-Load® hydraulic cargo bars are the toughest, yet lightest, most effortless cargo bars available

EASY, SAFE, AND SECURE

Save-A-Load's integrated hydraulic pump maintains a constant pressure to keep your cargo in place without falling or causing damage to trailer walls. When you're ready to unload, the bar releases with the simple push of a button!

We offer Save-A-Load bars in three sizes to meet your light, medium, and heavy duty cargo needs.

CUSTOMIZE YOUR CARGO BAR SOLUTION

Save-A-Load bars are available with numerous options that combine to build the perfect cargo bar for your application.

↔ FEET

Choose from numerous combinations of foot options to perfectly suit your needs. Styles include fixed and articulating rubber feet, f-track, and e-track ends.

☐ HOOPS

Adding a hoop increases the footprint of your Save-A-Load bar to make securing your freight even easier. Lightweight, aluminum hoops are available for all cargo bar sizes.

⚡ NON-SPARKING HARDWARE

Hazards exist even in cargo. Non-sparking, stainless steel hardware adds protection from dangerous gases, solvents, liquids, vapors or dust on cargo loads.

🎨 COLORS

Select from a wide spectrum of powder coated color options to keep your bars looking as good as you do.

⚙️ WARRANTY & REPLACEMENTS

Save-A-Load bars are built for excellent performance. Like all bars, they will work better when used frequently, taken care of and stored properly. Mishandling may cause damage and require replacement parts. Genuine replacement parts are available for all cargo bars and hoops (pages 20-23).

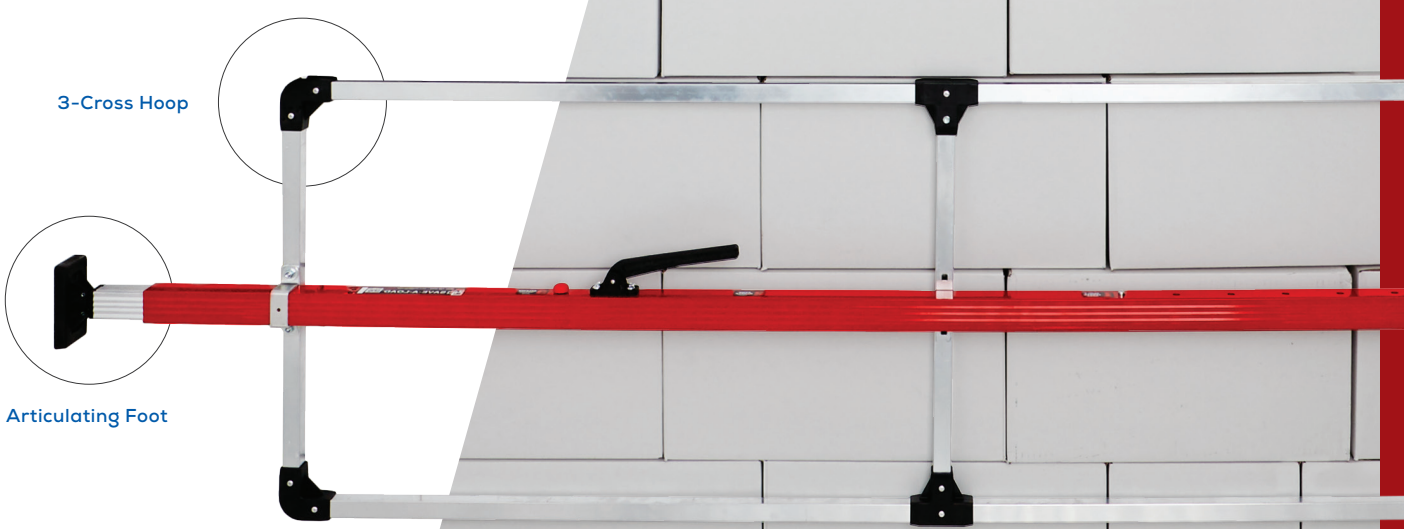
All Save-A-Load bars have a conditional Lifetime Warranty to the original purchaser. For details, see website, FLEETENGINEERS.COM. More information about the hydraulic system warranty can be found on page 20.





F-Track Foot

5-Cross Hoop



3-Cross Hoop

Articulating Foot

"If you're in the trucking business and you have not heard of Save-A-Load® cargo bars then you're paying freight claims."

– Brad Kreidler, Owner Operator

SL-30 CARGO BARS



84" - 114" LENGTH

SL30 HEAVY DUTY CARGO BARS



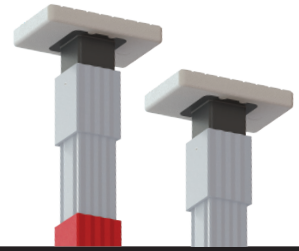
- Perfect for use in beverage trucks, dry vans, reefers, furniture trucks and more...
- Holds position even when the trailer walls flex due to road conditions, vibrations or temperature fluctuations
- Internal pressure relief valve prevents over compressing to minimize trailer/body wall damage
- Easy release push button instantly removes bars from position with one hand, with or without gloves
- Effortless and safe for operators with balanced weight distribution, no pinch points or heavy castings
- Aluminum and composite materials are corrosion free and safe in sensitive FDA load environments
- Lightweight system makes cargo bars and hoops easy to install, remove, and store
- Pressurized spring holds the bar in place while adding multiple bars/hoops on the same load - no dropping to the floor
- Use in vertical, horizontal, or diagonal positions with many end configurations
- Designed & Made in the USA!



SL-30 CARGO BARS With Articulating Feet on Both Ends

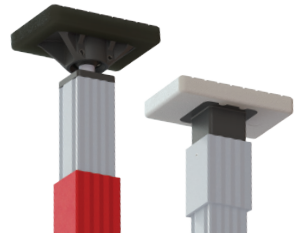
BAR ONLY	3-CROSS HOOP	5-CROSS HOOP	COLOR/FINISH	NON-SPARKING
080-01000	080-01200	080-01300	Mill Finish	-
080-01001	080-01201	080-01301	Orange	-
080-01002	080-01202	080-01302	Red	-
080-01003	080-01203	080-01303	Blue	-
080-01004	080-01204	080-01304	Yellow	-
080-01005	080-01205	080-01305	Green	-
080-01006	080-01206	080-01306	Pink	-
080-01007	080-01207	080-01307	Black	-
080-01056	CUSTOM	CUSTOM	Mill Finish	✓
080-01057	CUSTOM	CUSTOM	Orange	✓
080-01058	CUSTOM	CUSTOM	Red	✓
080-01059	CUSTOM	CUSTOM	Blue	✓
080-01060	CUSTOM	CUSTOM	Yellow	✓
080-01061	CUSTOM	CUSTOM	Green	✓
080-01062	CUSTOM	CUSTOM	Pink	✓
080-01063	CUSTOM	CUSTOM	Black	✓

NOTE: For 2-pack add -2 at the end of the part number; Hoop options are shipped attached to the bar and incur additional freight charges



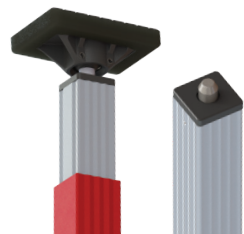
SL-30 CARGO BARS With Fixed Feet on Both Ends

BAR ONLY	3-CROSS HOOP	5-CROSS HOOP	COLOR/FINISH
080-01008	080-01208	080-01308	Mill Finish
080-01009	080-01209	080-01309	Orange
080-01010	080-01210	080-01310	Red
080-01011	080-01211	080-01311	Blue
080-01012	080-01212	080-01312	Yellow
080-01013	080-01213	080-01313	Green
080-01014	080-01214	080-01314	Pink
080-01015	080-01215	080-01315	Black



SL-30 CARGO BARS With Articulating Foot and Fixed Foot

BAR ONLY	3-CROSS HOOP	5-CROSS HOOP	COLOR/FINISH
080-01048	080-01248	080-01348	Mill Finish
080-01049	080-01249	080-01349	Orange
080-01050	080-01250	080-01350	Red
080-01051	080-01251	080-01351	Blue
080-01052	080-01252	080-01352	Yellow
080-01053	080-01253	080-01353	Green
080-01054	080-01254	080-01354	Pink
080-01055	080-01255	080-01355	Black



SL-30 CARGO BARS With Articulating Foot and F-Track

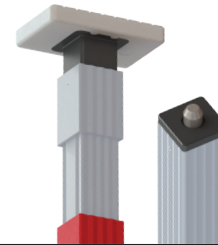
BAR ONLY	3-CROSS HOOP	5-CROSS HOOP	COLOR/FINISH
080-01016	080-01216	080-01316	Mill Finish
080-01017	080-01217	080-01317	Orange
080-01018	080-01218	080-01318	Red
080-01019	080-01219	080-01319	Blue
080-01020	080-01220	080-01320	Yellow
080-01021	080-01221	080-01321	Green
080-01022	080-01222	080-01322	Pink
080-01023	080-01223	080-01323	Black

NOTE: For 2-pack add -2 at the end of the part number; Hoop options are shipped attached to the bar and incur additional freight charges

SL-30 CARGO BARS

SL-30 CARGO BARS

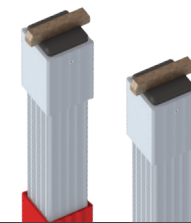
With Fixed Foot and F-Track



BAR ONLY	3-CROSS HOOP	5-CROSS HOOP	COLOR/FINISH
080-01024	080-01224	080-01324	Mill Finish
080-01025	080-01225	080-01325	Orange
080-01026	080-01226	080-01326	Red
080-01027	080-01227	080-01327	Blue
080-01028	080-01228	080-01328	Yellow
080-01029	080-01229	080-01329	Green
080-01030	080-01230	080-01330	Pink
080-01031	080-01231	080-01331	Black

SL-30 CARGO BARS

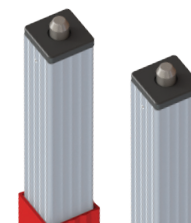
With E-Track Both Ends



BAR ONLY	3-CROSS HOOP	5-CROSS HOOP	COLOR/FINISH
080-01032	080-01232	080-01332	Mill Finish
080-01033	080-01233	080-01333	Orange
080-01034	080-01234	080-01334	Red
080-01035	080-01235	080-01335	Blue
080-01036	080-01236	080-01336	Yellow
080-01037	080-01237	080-01337	Green
080-01038	080-01238	080-01338	Pink
080-01039	080-01239	080-01339	Black

SL-30 CARGO BARS

With F-Track Both Ends



BAR ONLY	3-CROSS HOOP	5-CROSS HOOP	COLOR/FINISH
080-01040	080-01240	080-01340	Mill Finish
080-01041	080-01241	080-01341	Orange
080-01042	080-01242	080-01342	Red
080-01043	080-01243	080-01343	Blue
080-01044	080-01244	080-01344	Yellow
080-01045	080-01245	080-01345	Green
080-01046	080-01246	080-01346	Pink
080-01047	080-01247	080-01347	Black

NOTE: For 2-pack add -2 at the end of the part number; Hoop options are shipped attached to the bar and incur additional freight charges



69" - 96" LENGTH

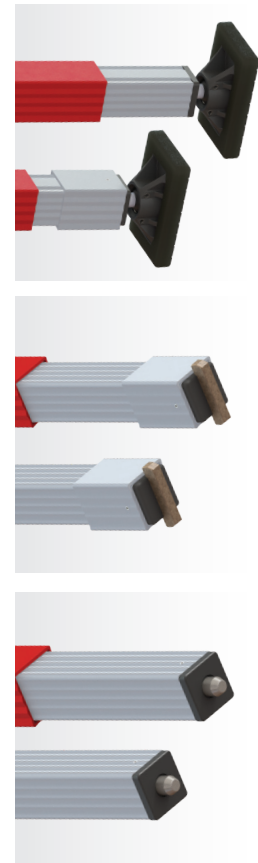


SL20 MEDIUM DUTY CARGO BARS

A smaller version of the heavy duty bar with all the same great features but instead the SL-20's pressure-limiting valve is set at a PSI specifically designed to stay put in a transport vehicle, such as a Sprinter van.

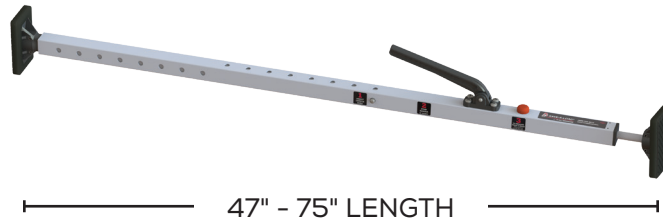
SL-20 CARGO BARS

PART NUMBER	END CONFIGURATION	COLOR/FINISH
080-01072	Articulating Feet Both Ends	Mill Finish
080-01073	Articulating Feet Both Ends	Orange
080-01074	Articulating Feet Both Ends	Red
080-01075	Articulating Feet Both Ends	Blue
080-01076	Articulating Feet Both Ends	Yellow
080-01077	Articulating Feet Both Ends	Green
080-01078	Articulating Feet Both Ends	Pink
080-01079	Articulating Feet Both Ends	Black
080-01088	E-Track Both Ends	Mill Finish
080-01089	E-Track Both Ends	Orange
080-01090	E-Track Both Ends	Red
080-01091	E-Track Both Ends	Blue
080-01092	E-Track Both Ends	Yellow
080-01093	E-Track Both Ends	Green
080-01094	E-Track Both Ends	Pink
080-01095	E-Track Both Ends	Black
080-01104	F-Track Both Ends	Mill Finish
080-01105	F-Track Both Ends	Orange
080-01106	F-Track Both Ends	Red
080-01107	F-Track Both Ends	Blue
080-01108	F-Track Both Ends	Yellow
080-01109	F-Track Both Ends	Green
080-01110	F-Track Both Ends	Pink
080-01111	F-Track Both Ends	Black



NOTE: For 2-pack add -2 at the end of the part number

SL-10 CARGO BARS



SL10 LIGHT DUTY CARGO BARS

The SL-10 Series Cargo Bar solves the sliding cargo problem for everyday pickups, vans and SUVs. Use this bar to secure everything from groceries to plants, or even heavy equipment such as large tool or gun boxes. With the bicycle carrier attachment (page 18), you can easily transport a pair of bikes.

The SL-10 uses the same hydraulic pump technology as our standard heavy duty bars and is easy to use and install. The pressure-limiting valve and various end configurations will not damage the walls of your vehicle.

Hauling items in your everyday vehicle is easy with the SL-10 Cargo Bar!



SL-10 CARGO BARS

PART NUMBER	END CONFIGURATION	FINISH	NON-SPARKING
080-01500	Articulating Feet Both Ends	Anodized	-
080-01501	Articulating Foot and Fixed Foot	Anodized	-
080-01502	Articulating Feet Both Ends	Anodized	✓
080-01503	Articulating Foot and Fixed Foot	Anodized	✓





INCREASE YOUR FOOTPRINT WITH ALUMINUM HOOPS

Heavy, loose, or bulky items will stay even more safe & secure when you add our lightweight hoops to your cargo bars. Each hoop is constructed with aluminum square tubing and aluminum rivets for strength & durability. Plus, they're easy to install with supplied hardware.



3-CROSS MEMBER HOOPS for SL-30 Cargo Bars

PART NUMBER	SIZE	ASSEMBLY	NON-SPARK	QTY
080-HP11-CR NS-10	24" x 75"	Assembled	✓	10
080-HP11-CR-10	24" x 75"	Assembled	-	10
080-HP11-UCR NS	24" x 75"	Unassembled	✓	1
080-HP11-UCR	24" x 75"	Unassembled	-	1

5-CROSS MEMBER HOOPS for SL-30 Cargo Bars

PART NUMBER	SIZE	ASSEMBLY	NON-SPARK	QTY
080-HP11-DR NS-10	24" x 75"	Assembled	✓	10
080-HP11-DR-10	24" x 75"	Assembled	-	10
080-HP11-UDR NS	24" x 75"	Unassembled	✓	1
080-HP11-UDR	24" x 75"	Unassembled	-	1

HOOPS for SL-10 and SL-20 Cargo Bars

PART NUMBER	BAR	SIZE	ASSEMBLY	NON-SPARK	QTY
080-HP11-ASV-10	SL-20	24" x 48"	Assembled	-	10
080-HP10-AR	SL-10	24" x 38"	Assembled	-	1
080-HP10-UAR	SL-10	24" x 38"	Unassembled	-	1
080-HP10-AR NS	SL-10	24" x 38"	Assembled	✓	1
080-HP10-UAR NS	SL-10	24" x 38"	Unassembled	✓	1

NOTE: All assembled hoops incur additional freight charges. For bars with hoops attached, see individual cargo bar pages or call customer service.



BICYCLE CARRIER

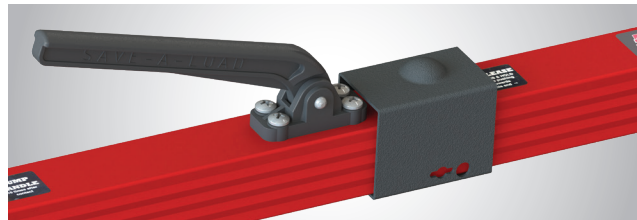
Transport your bicycles in the back of any pickup, utility trailer, or van by simply attaching our Bicycle Carrier to your SL-10 Cargo Bar.

- Mount Bikes of Almost Any Size
- Quick-Release Skewers and Fork Blocks Mount Forwards, Up, or Back
- Made with 100% Recyclable and Non-Rusting Materials

NOTE: To avoid potential stability issues, do not use bike carrier with a cargo bar that has articulating feet on both ends.

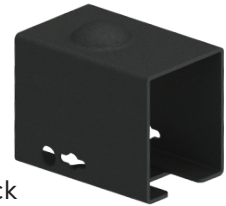


P/N	DESCRIPTION
080-BC-10	Bicycle Carrier for SL-10 Bars



LOCKING SLEEVE

In the event that you need to add security and lock your bar for only your use, our locking sleeve is easy to use. Slide it over the release button and lock with a padlock (not included).



P/N	DESCRIPTION
080-LS-10P	Locking Sleeve for SL-10 Bars
080-LS-10	Locking Sleeve for SL-20 & SL-30 Bars

NOTE: A custom part number is required if sleeve is shipped pre-assembled to the bar. Please contact Customer Service for more information.

XL EXTENSION TUBE

Does your application require a longer heavy duty bar? With our XL Tube, you can extend any SL-30 cargo bar up to 126". Simply replace the standard extension end with our extra long extension tube.

- XL Extension Tube increases the length range of any SL-30 from 84"-144" to 92"-126"
- Available only with an articulating or fixed foot
- For use with SL-30 cargo bars only

P/N	DESCRIPTION
080-R045XL	XL Extension Tube with Articulating Foot
080-R055XL	XL Extension Tube with Fixed Foot



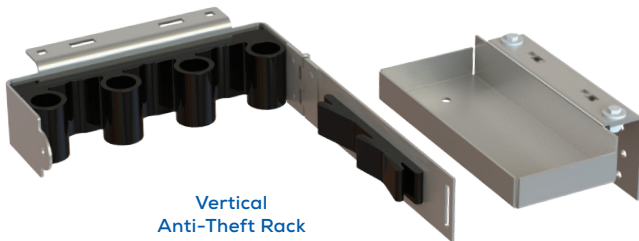
STORAGE AND SECURITY

Protect & secure your cargo bar investment by locking up your cargo bars with our exclusive anti-theft rack.

Finding a way to store cargo bars when not in use has always been a challenge, especially during transit. Bars must be secured to avoid becoming projectiles in an accident.

- Polyurethane Compartments Securely Hold up to Three Cargo Bars of any Size
- Can be Locked with any Padlock to Prevent Cargo Bar Theft
- Powder Coated Steel for High Strength
- Stainless Steel Hinge for Extended Use
- Includes Universal Mounting Plates

P/N	DESCRIPTION
080-ATR-20	Vertical Save-A-Load Anti-Theft Rack
080-ATR-30	Horizontal Save-A-Load Anti-Theft Rack



Vertical
Anti-Theft Rack



Horizontal
Anti-Theft Rack



Save-A-Load® bars are built for excellent performance. Like all cargo bars, they will work better when used frequently, taken care of and stored properly. Mishandling may cause damage and require replacement parts. Genuine replacement parts are available for all cargo bars and hoops.

HYDRAULIC SYSTEM REPLACEMENT WARRANTY

Fleet Engineers, A Division of Tramec Sloan, warrants to the owner that if the hydraulic system fails within the first 12 months of service, Fleet Engineers will replace the hydraulic pump free of charge upon inspection. Inspections are made and pump failure determined by an authorized Save-A-Load representative. In the event your hydraulic pump needs inspection within the first 12 months of service, please contact our customer service department at 800-333-7890. You will be asked to provide the proof of service dates and the hydraulic pump serial number. For products subject to this warranty, you will be provided a Returned Goods Authorization (RGA) number and warranty service instructions. Upon inspection, Fleet Engineers will credit standard shipping costs on the return of a failed hydraulic system and a new hydraulic pump, including shipment.

Purchaser is responsible for the costs of special shipping requests.

There will be a warranty service charge for replacement of hydraulic systems in service longer than one year. Please do not send back your worn out or damaged hydraulic system. The warranty services charge does not include the shipping or handling of hydraulic system replacement.

Fleet Engineers shall not be liable for any consequential or incidental damages including but not limited to claims for lost profits or business interruption. In no case shall damages hereunder exceed the purchase price of the cargo bar. Freight charges on any returned components to be prepaid by the customer to Fleet Engineers. There may be a labor charge plus return freight for customer repairable bars sent back for repair.

REPLACEMENT HYDRAULIC SYSTEMS

May be covered under warranty

P/N	DESCRIPTION
080-PI	SL-10 Hydraulic System
080-R099	SL-20 Hydraulic System
080-R091**	SL-30 Hydraulic System

**Add -25 to part number for 25/pack



CARGO BAR REPLACEMENT PARTS



080-R060R



080-R045R or
080-R045XL



080-R111R



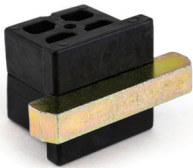
080-R070



080-R055R or
080-R055XL



080-R121



080-R036



080-R035



080-R122



080-R028



080-R027



080-PRDP



080-R031

END FOOT REPLACEMENTS

*Add -10 to part number for 10/pack ** Add -25 to part number for 25/pack

PART NUMBER	CARGO BAR	DESCRIPTION
080-R060R**	SL-30/SL-20	Articulating Foot with Reinforced Ankle and Roll Pins
080-R045R*	SL-30/SL-20	Articulating Foot with Extension Tube, includes Snap Button
080-R045XL	SL-30	Articulating Foot with XL Extension Tube and Reinforced Collar
080-R111R* **	SL-30/SL-20	Articulating Foot with Power Rod Assembly, includes End Guides
080-R070**	SL-30/SL-20	Fixed Foot with Roll Pins
080-R055R*	SL-30/SL-20	Fixed Foot with Extension Tube, includes Snap Button
080-R055XL	SL-30	Fixed Foot with XL Extension Tube and Reinforced Collar
080-R121* **	SL-30/SL-20	Fixed Foot with Power Rod Assembly, includes End Guides
080-R036	SL-30/SL-20	E-Track with Roll Pins
080-R035	SL-30/SL-20	F-Track with Roll Pins
080-R122	SL-30/SL-20	F-Track with Power Rod Assembly, includes End Guides
080-R027	SL-10	Fixed Foot with Roll Pins for the Extension Tube End
080-R028	SL-10	Articulating Foot with Roll Pins for the Extension Tube End
080-PRDP	SL-10	Articulating Foot with Power Rod
080-R031	SL-30/SL-20	Extension Tube Collar and Roll Pin

CARGO BAR REPLACEMENT PARTS

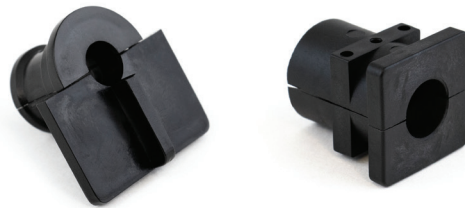
ROLL PINS

P/N	DESCRIPTION
080-A107-50	1/4" x 1-3/4" Roll Pin for Main Tube
080-A108-50	1/8" x 1-3/4" Roll Pin for Extension Collar
080-A091-50	1/8" x 1-1/2" Roll Pin for Attaching Feet
080-A051-50	1/8" x 1-1/4" Roll Pin for Main Tube
080-A050-50	1/8" x 1" Roll Pin for Attaching Feet
080-604	1/8" x 4" Roll Pin Punch
080-6516	1/4" x 8" Roll Pin Punch



END GUIDES

P/N	DESCRIPTION
080-R021**	SL-10 End Guide
080-R020**	SL-30/SL-20 End Guide



PUMP HANDLE ASSEMBLY

For All Save-A-Load® Hydraulic Cargo Bars

P/N	DESCRIPTION
080-R131**	Pump Handle Assembly
080-A145-100	Bracket Screws - Zinc - 100/pack
080-A145SS-100	Bracket Screws - Stainless - 100/pack



SNAP BUTTON

For All Save-A-Load® Hydraulic Cargo Bars

P/N	DESCRIPTION
080-A151**	Snap Button - Zinc
080-A151SS**	Snap Button - Stainless Steel



RELEASE BUTTON

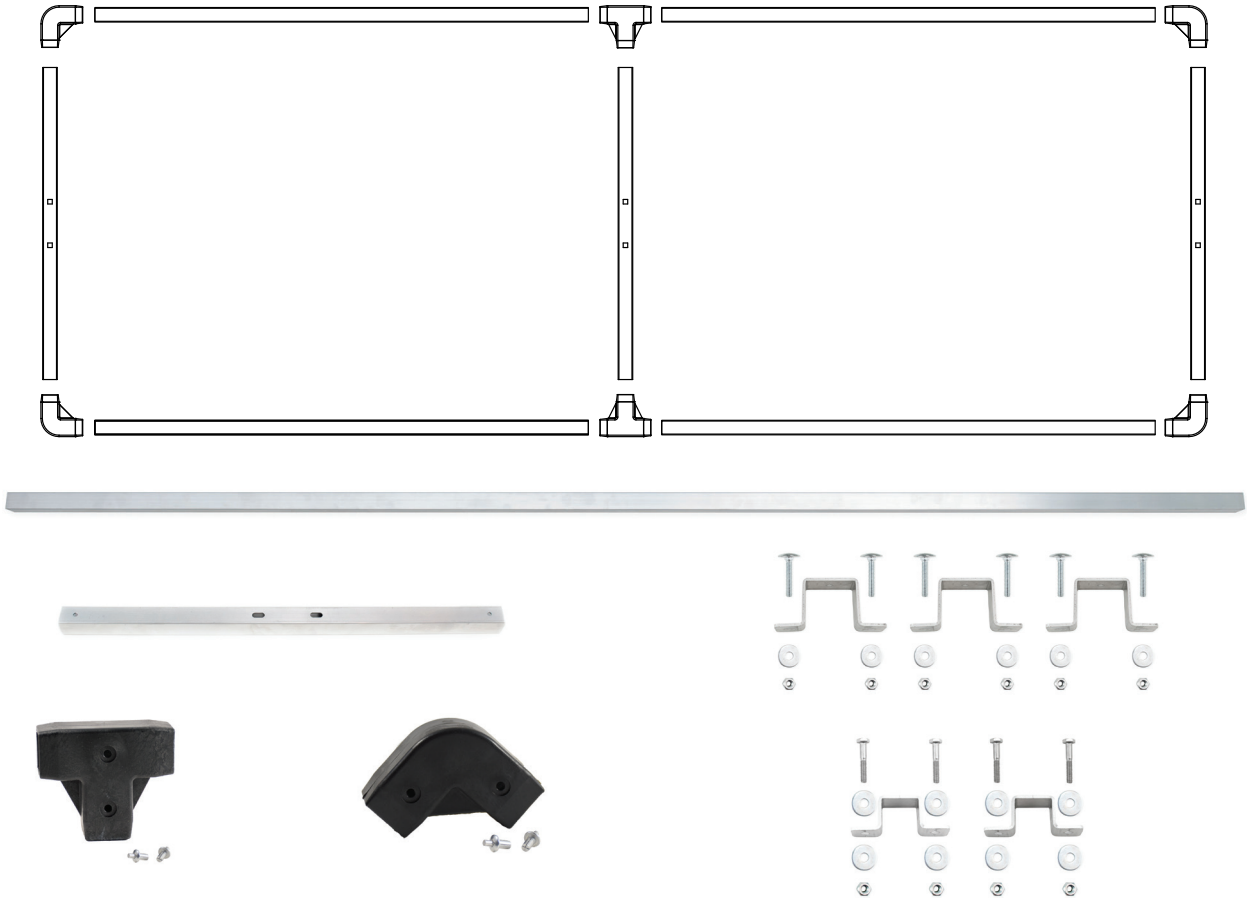
For All Save-A-Load® Hydraulic Cargo Bars

P/N	DESCRIPTION
080-H113**	Cover for Release Button
080-R010**	Release Button Assembly, includes Cover



** Add -25 to part number for 25/pack

HOOP REPLACEMENT PARTS

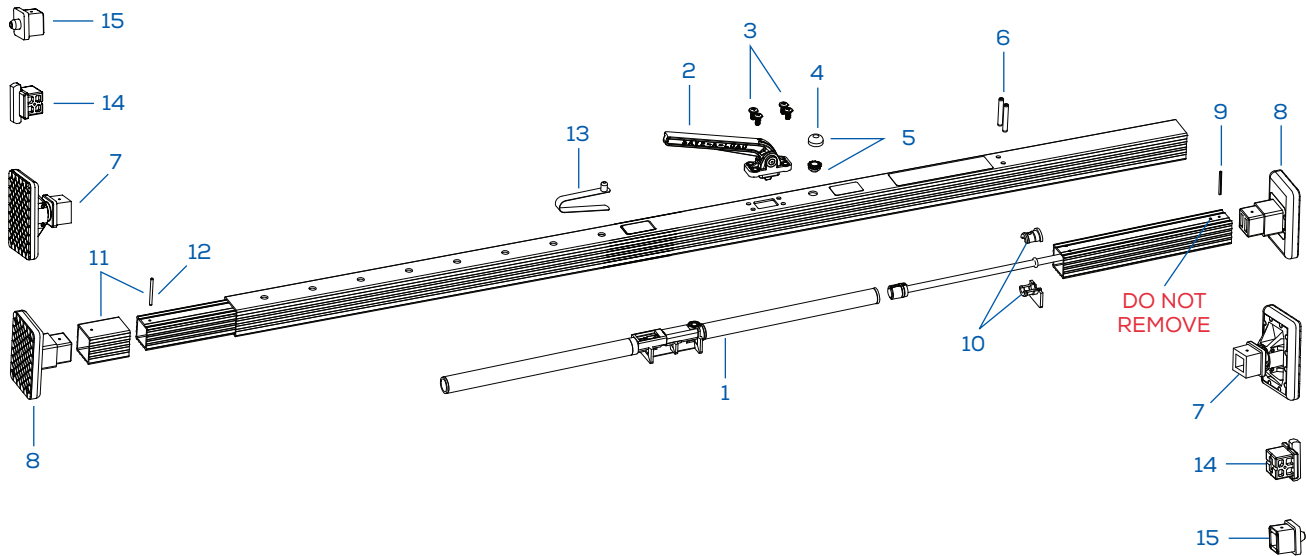


PART NUMBER	DESCRIPTION
080-R085R	Hoop Conversion Kit: Convert from three cross member hoop to five cross member hoop Includes: (2) cross members + (4) T-pieces + (8) drive rivets
080-R086R	Hoop Cross Member Kit: Repairing 080-HP11-CR or 080-HP11-DR Includes: (1) cross member + (2) T-pieces + (4) drive rivets
080-R087R**	Hoop Elbow Replacement Kit Includes: (1) corner piece + (2) drive rivets
080-R088R**	Hoop Tee Replacement Kit Includes: (1) T-piece + (2) drive rivets
080-RHP20	Hoop Side Member Kit: Replacement for 080-HP11-CR and 080-HP11-DR Includes: (1) side member + (5) drive rivets
080-RHP21**	Hoop Cross Member Kit: Replacement for 080-HP10-AR, 080-HP11-CR and 080-HP11-DR Kit includes: (1) cross member + (5) drive rivets
080-R080* **	Zinc Hoop Hardware Kit for attaching hoops to all SL-30 & SL-20 cargo bars. Included with purchase of 080-HP11-CR and 080-HP11-DR hoops
080-R080SS* **	Stainless Steel Hoop Hardware Kit for attaching hoops to all SL-30 & SL-20 cargo bars. Included with purchase of 080-HP11-CR NS and 080-HP11-DR NS hoops
080-R081**	Zinc Hoop Hardware Kit for attaching 080-HP10-AR to item SL-10 cargo bars Included with the purchase of the hoop
080-R081SS**	Stainless Steel Hoop Hardware Kit for attaching 080-HP10-AR NS to item SL-10 cargo bars Included with the purchase of the hoop
080-R089R	Replacement Aluminum Rivets - 50/pack

*Add -10 to part number for 10/pack

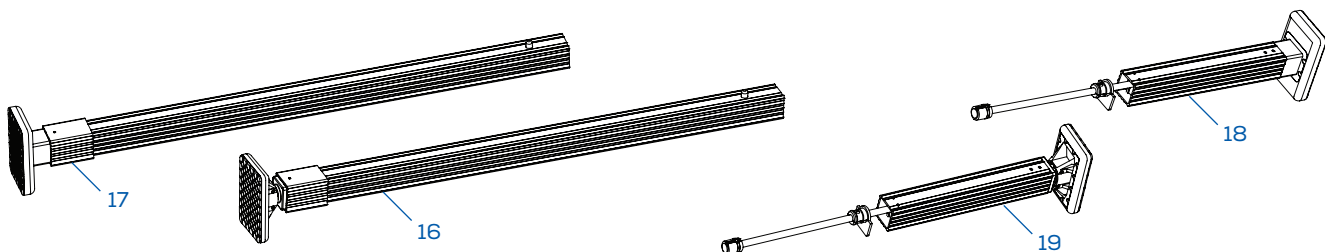
**Add -25 to part number for 25/pack

SL-20 & SL-30 EXPLODED VIEW

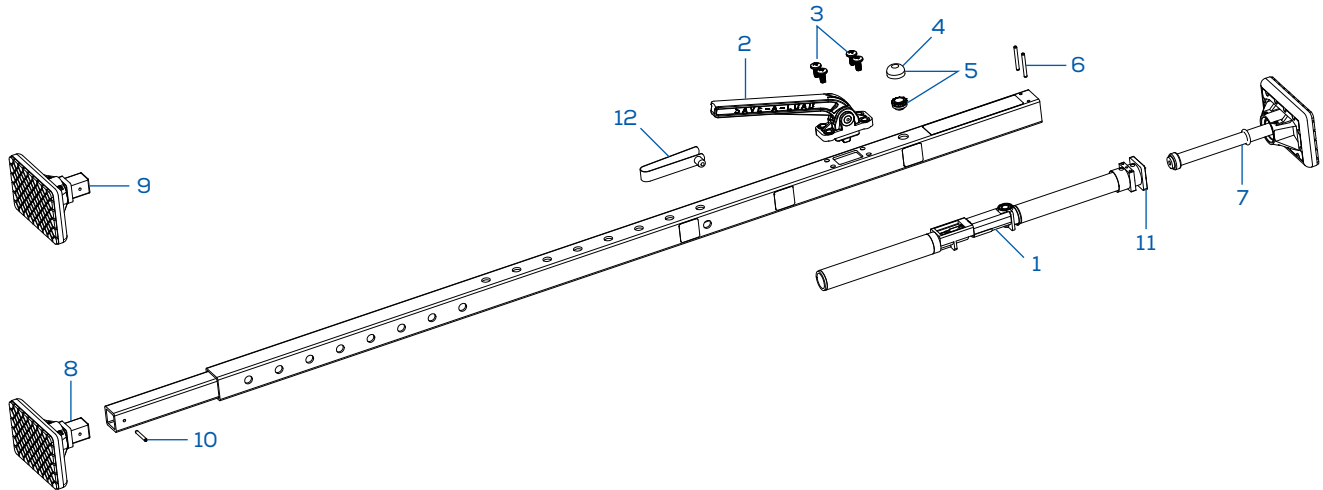


SL-20 & SL-30 COMPONENTS

#	PART NUMBER	DESCRIPTION
1	080-R091	Heavy Duty Hydraulic System for SL-30 & SL-20 Cargo Bars
2	080-R131	Pump Handle Assembly
3	080-A145-100	Bracket Screw (Zinc)
	080-A145SS-100	Bracket Screw (Stainless Steel)
4	080-H113	Release Button Cover
5	080-R010	Release Button Assembly w/Cover
6	080-A107-50	Roll Pin 1/4" x 1-3/4" for Main Tube (Zinc)
7	080-R060R	Articulating Foot with Roll Pin
8	080-R070	Fixed Foot with Roll Pin
9	080-A091-50	Roll Pin 1/8" x 1-1/2" for foot without extension tube collar
10	080-R020	End Guide Assembly
11	080-R031	Extension Tube Collar and Roll Pin
12	080-A108-50	Roll Pin 1/8" x 1-3/4" (Zinc)
13	080-A151	Snap Button (Zinc)
	080-A151SS	Snap Button (Stainless Steel)
14	080-R036	E-Track Foot with Roll Pin
15	080-R035	F-Track Foot with Roll Pin
16	080-R045R	Extension Tube with Articulating Foot
17	080-R055R	Extension Tube with Fixed Foot
18	080-R121	Power Tube & Power Rod with Fixed Foot and End Guides
19	080-R111R	Power Tube & Power Rod with Articulating Foot and End Guides
-	080-R122	Power Tube & Power Rod with F-Track Foot and End Guides



SL-10 EXPLODED VIEW



SL-10 COMPONENTS

#	PART NUMBER	DESCRIPTION
1	080-PI	Hydraulic System for SL-10 Cargo Bars with End Guide
2	080-R131	Pump Handle Assembly
3	080-A145-100	Bracket Screw (Zinc)
	080-A145SS-100	Bracket Screw (Stainless Steel)
4	080-H113	Release Button Cover
5	080-R010	Release Button Assembly with Cover
6	080-A051-50	Roll Pin 1/8" x 1-1/4" for Main Tube (Stainless Steel)
7	080-PRDP	Articulating Foot with Power Rod
8	080-R028	Articulating Foot for Extension Tube End with Roll Pin
9	080-R027	Fixed Foot for Extension Tube End with Roll Pin
10	080-A050-50	Roll Pin 1/8" x 1" for Foot (Zinc)
11	080-R021	End Guide Assembly
12	080-A151	Snap Button (Zinc)
	080-A151SS	Snap Button (Stainless Steel)

CORNER PROTECTORS

STEEL CORNER PROTECTOR

For Steel Coils

- Protects both cargo and strap
- Holds chain or straps up to 3" wide
- Provides excellent protection when used with coils
- 50 per box



P/N	DESCRIPTION
982-00255	Steel Corner Protector for Steel Coils

STEEL CORNER PROTECTOR

- Protects loads and tie-down equipment
- Helps prevent load from loosening due to cutting into product
- Use in a variety of applications such as timber, sheet rock, etc.
- For use with cable and chains
- Hot dipped galvanized finish
- 25 to a bag/10 per box



P/N	DESCRIPTION
982-00302	Steel Corner Protector

SLOTTED PLASTIC CORNER PROTECTOR

- For maximum performance, thread straps through slots on both ends
- Extra large ears help keep strap in the proper position
- Fits 4" straps - 100 per box



P/N	DESCRIPTION
982-00256	5.25" Black Slotted Corner Protector

RIBBED PLASTIC CORNER PROTECTORS

- Use in a variety of applications
- Protects cargo and is easy to use
- Vertical ribs add strength
- For use with straps up to 4" wide
- Black polypropylene construction
- Made in the USA!



P/N	RIBS	SLOT(S)	LENGTH
982-00317	2 Ribs	1 Center	12"
982-00318	4 Ribs	1 Center	24"
982-00319	6 Ribs	1 Center	36"
982-00320	8 Ribs	2 End	48"

TIE-DOWN RINGS

- Tie down anchor for chains, ratchet straps, tarp straps, etc
- Black primed finish on D-Ring
- Plain finish on Stamped Steel Weld Clip to be welded to metal surfaces
- Black primed finish on Bolt-On Mounting Bracket with holes on 2" centers with overall length of 3"
- FOR LOAD SECUREMENT PURPOSES ONLY



1/2" D-Ring with Weld Clip



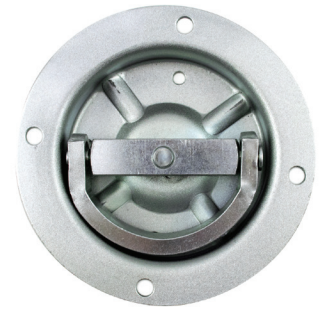
1/2" D-Ring with Bolt-On Bracket

P/N	DESCRIPTION	SIZE	WORKING LOAD	BREAKING STRENGTH	INSIDE DIMENSIONS
982-00270	1/2" D-Ring and Weld Clip, Bulk Set	0.50"	5,000 lbs	15,000 lbs	2.38" x 2.5"
982-00304	1/2" D-Ring & Bolt-On Mounting Bracket, Bulk Set	0.50"	5,000 lbs	15,000 lbs	2.38" x 2.5"
982-00212	1/2" D-Ring Only	0.50"	5,000 lbs	15,000 lbs	2.38" x 2.5"
982-00239	1/2" Weld Clip Only	0.50"	-	-	-
982-00303	1/2" Bolt-On Clip Only	0.50"	-	-	-
982-00046	D-Ring and Weld Clip, Bulk Set	0.62"	6,000 lbs	18,000 lbs	3.5" x 2.88"
982-00049	D-Ring Only	0.62"	6,000 lbs	18,000 lbs	3.5" x 2.88"
982-00048	Weld Clip Only	0.62"	-	-	-
982-00271	5/8" D-Ring with Weld Clip	0.625"	8,000 lbs	24,000 lbs	3" x 3"
982-00214	5/8" D-Ring Only	0.625"	8,000 lbs	24,000 lbs	3" x 3"
982-00240	5/8" Stamped Steel Weld Clip Only	0.625"	-	-	-
982-00272	3/4" D-Ring with Weld Clip	0.75"	10,000 lbs	30,000 lbs	3" x 3"
982-00216	3/4" D-Ring Only	0.75"	10,000 lbs	30,000 lbs	3" x 3"
982-00242	3/4" Stamped Steel Weld Clip Only	0.75"	-	-	-
982-00273	1" D-Ring and Weld Clip, Bulk Set	1.00"	16,000 lbs	48,000 lbs	3" x 3"
982-00220	1" D-Ring Only	1.00"	16,000 lbs	48,000 lbs	3" x 3"
982-00274	1" D-Ring and Weld Clip, Bulk Set	1.00"	16,000 lbs	48,000 lbs	3" x 4"
982-00221	1" D-Ring Only	1.00"	16,000 lbs	48,000 lbs	3" x 4"
982-00243	1" Stamped Steel Clip Only	1.00"	-	-	-

LASHING RINGS

RECESSED TIE DOWN RING ASSEMBLY

- Steel construction
- Zinc plated finish
- Drain holes in bottom of cup
- Ring opening width is 3.25"
- *FOR LOAD SECUREMENT PURPOSES ONLY*



P/N	DESCRIPTION	WORKING LOAD	BREAKING STRENGTH
983-00135	Recessed Tie Down Ring, 6.06" dia.	2,300 lbs	7,000 lbs

RECESSED LASHING RINGS

- Formed 1/8" steel pan houses a ductile iron ring which folds down into pan
- 982-00260 requires 7/8" clearance below surface
- 982-00268 is for use in van bodies



P/N	DESCRIPTION	WORKING LOAD	BREAKING STRENGTH
982-00260	Recessed Lashing Ring, 4.88" x 4.5"	2,000 lbs	5,000 lbs
982-00268	Recessed Lashing Ring, 4" x 3.69"	1,500 lbs	3,500 lbs



SURFACE MOUNTED ROPE RING

- Surface mounted pan with .25" ring

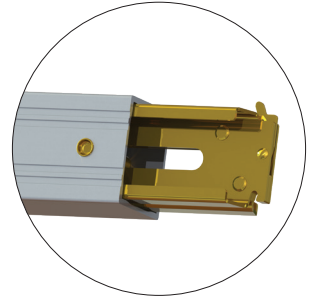
P/N	DESCRIPTION	WORKING LOAD	BREAKING STRENGTH
982-00257	Surface Mounted Rope Ring, 4" dia.	400 lbs	1,200 lbs



TRAILER DECKING BEAM

Decking or Shoring beams offer a strong and secure way double stack unstackable products, or shore back a load in any trailer containing E and A logistics tracks. Our beams are made from extruded high strength aluminum for lightweight and maximum strength. Adjustable extrusions slide in and out of the square beam to fit 84", 96" and 102" trailers.

- Fits "E" and "A" Logistics Tracks
- Aluminum beam
- 2000 lbs. capacity
(Working Load Capacity based on evenly distributed loads)



P/N	DESCRIPTION
080-ACS40-D	Decking Beam for 84", 96" and 102" Trailers

Save-A-Load

080-604.....	22	080-01051.....	13	080-01217.....	13	080-01315.....	13
080-01000.....	12	080-01052.....	13	080-01218.....	13	080-01316.....	13
080-01001.....	12	080-01053.....	13	080-01219.....	13	080-01317.....	13
080-01002.....	12	080-01054.....	13	080-01220.....	13	080-01318.....	13
080-01003.....	12	080-01055.....	13	080-01221.....	13	080-01319.....	13
080-01004.....	12	080-01056.....	12	080-01222.....	13	080-01320.....	13
080-01005.....	12	080-01057.....	12	080-01223.....	13	080-01321.....	13
080-01006.....	12	080-01058.....	12	080-01224.....	14	080-01322.....	13
080-01007.....	12	080-01059.....	12	080-01225.....	14	080-01323.....	13
080-01008.....	13	080-01060.....	12	080-01226.....	14	080-01324.....	14
080-01009.....	13	080-01061.....	12	080-01227.....	14	080-01325.....	14
080-01010.....	13	080-01062.....	12	080-01228.....	14	080-01326.....	14
080-01011.....	13	080-01063.....	12	080-01229.....	14	080-01327.....	14
080-01012.....	13	080-01072.....	15	080-01230.....	14	080-01328.....	14
080-01013.....	13	080-01073.....	15	080-01231.....	14	080-01329.....	14
080-01014.....	13	080-01074.....	15	080-01232.....	14	080-01330.....	14
080-01015.....	13	080-01075.....	15	080-01233.....	14	080-01331.....	14
080-01016.....	13	080-01076.....	15	080-01234.....	14	080-01332.....	14
080-01017.....	13	080-01077.....	15	080-01235.....	14	080-01333.....	14
080-01018.....	13	080-01078.....	15	080-01236.....	14	080-01334.....	14
080-01019.....	13	080-01079.....	15	080-01237.....	14	080-01335.....	14
080-01020.....	13	080-01088.....	15	080-01238.....	14	080-01336.....	14
080-01021.....	13	080-01089.....	15	080-01239.....	14	080-01337.....	14
080-01022.....	13	080-01090.....	15	080-01240.....	14	080-01338.....	14
080-01023.....	13	080-01091.....	15	080-01241.....	14	080-01339.....	14
080-01024.....	14	080-01092.....	15	080-01242.....	14	080-01340.....	14
080-01025.....	14	080-01093.....	15	080-01243.....	14	080-01341.....	14
080-01026.....	14	080-01094.....	15	080-01244.....	14	080-01342.....	14
080-01027.....	14	080-01095.....	15	080-01245.....	14	080-01343.....	14
080-01028.....	14	080-01104.....	15	080-01246.....	14	080-01344.....	14
080-01029.....	14	080-01105.....	15	080-01247.....	14	080-01345.....	14
080-01030.....	14	080-01106.....	15	080-01248.....	13	080-01346.....	14
080-01031.....	14	080-01107.....	15	080-01249.....	13	080-01347.....	14
080-01032.....	14	080-01108.....	15	080-01250.....	13	080-01348.....	13
080-01033.....	14	080-01109.....	15	080-01251.....	13	080-01349.....	13
080-01034.....	14	080-01110.....	15	080-01252.....	13	080-01350.....	13
080-01035.....	14	080-01111.....	15	080-01253.....	13	080-01351.....	13
080-01036.....	14	080-01200.....	12	080-01254.....	13	080-01352.....	13
080-01037.....	14	080-01201.....	12	080-01255.....	13	080-01353.....	13
080-01038.....	14	080-01202.....	12	080-01300.....	12	080-01354.....	13
080-01039.....	14	080-01203.....	12	080-01301.....	12	080-01355.....	13
080-01040.....	14	080-01204.....	12	080-01302.....	12	080-01500.....	16
080-01041.....	14	080-01205.....	12	080-01303.....	12	080-01501.....	16
080-01042.....	14	080-01206.....	12	080-01304.....	12	080-01502.....	16
080-01043.....	14	080-01207.....	12	080-01305.....	12	080-01503.....	16
080-01044.....	14	080-01208.....	13	080-01306.....	12	080-6516.....	22
080-01045.....	14	080-01209.....	13	080-01307.....	12	080-A050-50.....	22
080-01046.....	14	080-01210.....	13	080-01308.....	13	080-A051-50.....	22
080-01047.....	14	080-01211.....	13	080-01309.....	13	080-A091-50.....	22
080-01048.....	13	080-01212.....	13	080-01310.....	13	080-A107-50.....	22
080-01049.....	13	080-01213.....	13	080-01311.....	13	080-A108-50.....	22
080-01050.....	13	080-01214.....	13	080-01312.....	13	080-A145-100.....	22
		080-01215.....	13	080-01313.....	13	080-A145SS-100.....	22
		080-01216.....	13	080-01314.....	13	080-A151.....	22

080-A151SS	22	Other Cargo Control	
080-ACS40-D.....	29		
080-ATR-20	19	982-00046	27
080-ATR-30.....	19	982-00048	27
080-BC-10.....	18	982-00049	27
080-H113.....	22	982-00212	27
080-HP10-AR.....	17	982-00214	27
080-HP10-AR NS.....	17	982-00216	27
080-HP10-UAR.....	17	982-00220	27
080-HP10-UAR NS.....	17	982-00221	27
080-HP11-ASV-10.....	17	982-00239	27
080-HP11-CR-10.....	17	982-00240	27
080-HP11-CR NS-10.....	17	982-00242	27
080-HP11-DR-10	17	982-00243	27
080-HP11-DR NS-10	17	982-00255	26
080-HP11-UCR.....	17	982-00256	26
080-HP11-UCR NS.....	17	982-00257.....	28
080-HP11-UDR.....	17	982-00260	28
080-HP11-UDR NS.....	17	982-00268.....	28
080-LS-10	18	982-00270.....	27
080-LS-10P.....	18	982-00271.....	27
080-PI	20	982-00272.....	27
080-PRDP.....	21	982-00273.....	27
080-R010.....	22	982-00274.....	27
080-R020.....	22	982-00302	26
080-R021.....	22	982-00303	27
080-R027	21	982-00304	27
080-R028.....	21	982-00317.....	26
080-R031.....	21, 24	982-00318	26
080-R035.....	21	982-00319	26
080-R036.....	21	982-00320	26
080-R045R	21	983-00135	28
080-R045XL.....	18, 21		
080-R055R	21		
080-R055XL.....	18, 21		
080-R060R.....	21		
080-R070	21		
080-R080.....	23		
080-R080SS	23		
080-R081.....	23		
080-R081SS	23		
080-R085R.....	23		
080-R086R.....	23		
080-R087R	23		
080-R088R.....	23		
080-R089R.....	23		
080-R091.....	20		
080-R099.....	20		
080-R111R	21		
080-R121.....	21		
080-R122.....	21		
080-R131.....	22		
080-RHP20.....	23		
080-RHP21.....	23		

"Save-A-Load makes a superior load bar. It doesn't break, works in all weather conditions and withstands being moved all day by the drivers. It is great!

I have also found that Save-A-Load has an excellent sales/customer service staff. They are very knowledgeable and do a good job in expediting our orders so we get them when we need them.

Even more important than all of the above is the fact that they stand behind their product. I highly recommend it!"

– Tom C., Transportation Supervisor, Sysco

"If you're in the trucking business and you have not heard of Save-A-Load cargo bars then you're paying freight claims."

– Brad Kreidler, Owner Operator

"Delivering our snack foods in a 53-foot trailer requires reliable equipment to secure the product and prevent breakage. Save-A-Load bars, hoops, and locking bar holders have met those needs effectively – and at a price well within our budget. I highly recommend Save-A-Load."

– Dana R., Frito Lay

"The reason we use Save-A-Load bars is because you only have to buy them once... they last forever."

– John S., Maintenance Supervisor, Coca Cola

CONTACT INFORMATION:

PHONE:

TS: 800.336.7778
FE: 800.333.7890

CUSTOMER SERVICE:

customerservice@tramecsloan.com
csrs@fleetengineers.com

ONLINE:

tramecsloan.com
fleetengineers.com

U.S. MANUFACTURING & DISTRIBUTION:

534 East 48th Street
Holland, MI 49423

1800 East Keating Avenue
Muskegon, MI 49442

1310 Freese Works Place
Galion, OH 44833

2502 North State Street
Iola, KS 66749

“Save-A-Load® makes a superior load bar. It doesn't break, works in all weather conditions and withstands being moved all day by the drivers. It is great!

I have also found that Save-A-Load has an **excellent sales/customer service** staff. They are very knowledgeable and do a good job in expediting our orders so we get them when we need them.

Even more important than all of the above is the fact that **they stand behind their product. I highly recommend it!**”

– Tom C., Transportation Supervisor, Sysco

P/N: CARGOCAT100

©2020 TRAMEC SLOAN LLC

