



**C.P. LAUMAN COMPANY**  
 SUPPLIER OF PREMIUM CASTERS, WHEELS, HAND TRUCKS  
 & CARGO CONTROL EQUIPMENT  
 ESTABLISHED 1941



**The World's Only 3-A, USDA & EHEDG Certified Leveling Mount**

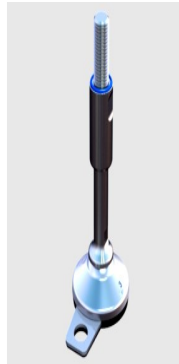
## HYGIENIC LEVELING MOUNT



### XH SERIES

#### SPECIAL FEATURES

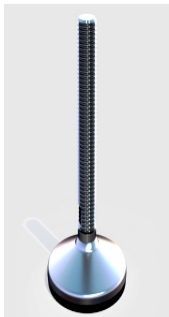
- Optimal design with a hygienic sealing of the base and thread.
- The foot is easy to clean
- Approved to be used in the food industry.
- Max load 3372lbs - 4946lbs
- Foot admits slopes up to 10°



### XH USDA, 3-A SERIES

#### SPECIAL FEATURES

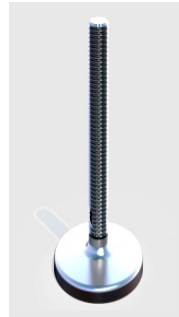
- Optimal design with a hygienic sealing of the base and thread.
- Fixed foot and easy to clean
- Max load 3372lbs
- Approved to be used in dairy, brewery and pharmaceutical industry
- Foot admits slopes up to 10°



### HX SERIES

#### SPECIAL FEATURES

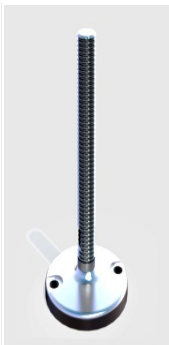
- Optimal design with a hygienic sealing of the base and thread.
- Max load 2023lbs - 4945lbs
- Optional fixing to the floor including hygienic washer
- Anti-vibration with anti-skid rubber
- The foot is easy to clean



### HG SERIES

#### SPECIAL FEATURES

- High load capacity model
- Flexible thread admits up to 9° slopes
- Max load 6812lbs - 9847lbs
- The foot is easy to clean
- Anti-vibration with anti-skid rubber



### HJ SERIES

#### SPECIAL FEATURES

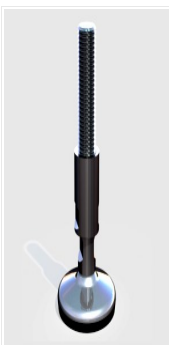
- Flexible thread admits up to 9° slopes
- Max load 6812lbs - 9847lbs
- The foot is easy to clean
- Anti-vibration with anti-skid Rubber



### HJ USDA SERIES

#### SPECIAL FEATURES

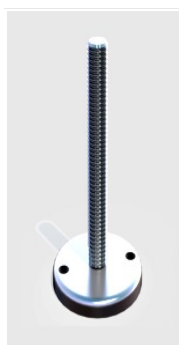
- Flexible thread admits up to 9° slopes
- Max load 9847lbs
- The foot is easy to clean
- Available with bolt-down holes
- Suitable for hygienic production environments



### H SERIES

#### SPECIAL FEATURES

- Approved to be used in the food industry.
- Max load 1573lbs - 6744lbs
- Optional fixing to the floor including hygienic washer
- The foot is easy to clean
- Anti-vibration with anti-skid rubber



### J SERIES

#### SPECIAL FEATURES

- High load capacity model
- 2 lag holes and a smoothly rounded design
- Max load 6812lbs - 9847lbs
- The foot is easy to clean
- Anti-vibration with anti-skid Rubber

**For more information please visit us at [www.cplauman.com](http://www.cplauman.com) or call us at 1-800-462-4005**